

General Information

INTRAD materials should be stored flat and protected against damage. Allow 24 hours for materials to reach ambient room temperature.

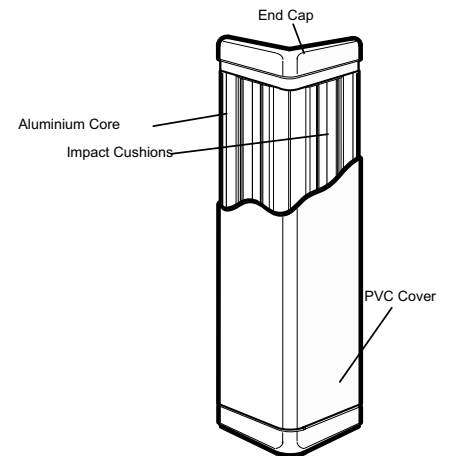
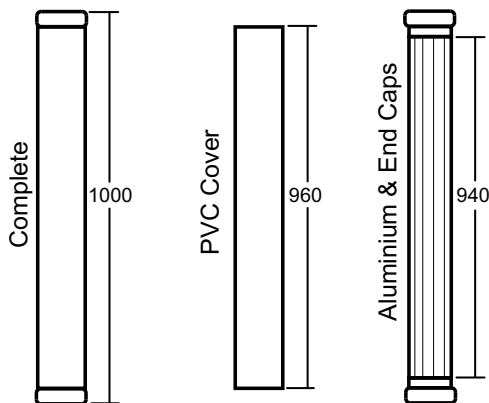
The cornerguard maybe supplied cut to size and ready to fit, if this is NOT the case the PVC cover and aluminium core will require trimming to accept the end caps.

For example:

If the final overall height of the cornerguard is to be 1000mm, the PVC cover will need to be 960mm and the aluminium 940mm long. See diagrams.

Calculation aid :

If total height = Xmm
PVC cover = X-40mm
Aluminium core = X-60mm



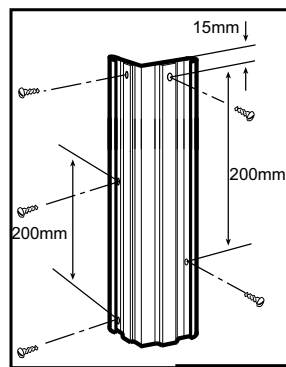
STEP 1

Drill the aluminium core at 200mm staggered intervals for screw fixing to the wall. Drill also holes through the soft impact cushions 15mm in from each end (top and bottom) to accept screws to secure the end cap lugs.



STEP 2

Mark fixing positions to the wall using the aluminium as a template. Drill and plug the wall, and using appropriate fixing screws (see fixings guide) fix the retainer to the wall.



STEP 1&2



STEP 3

Insert end caps top and bottom so that the lugs fit behind the aluminium and secure using self tapping screws.



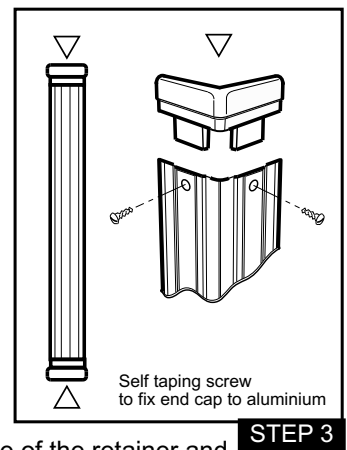
STEP 4

Peel backing tape away from impact cushions.



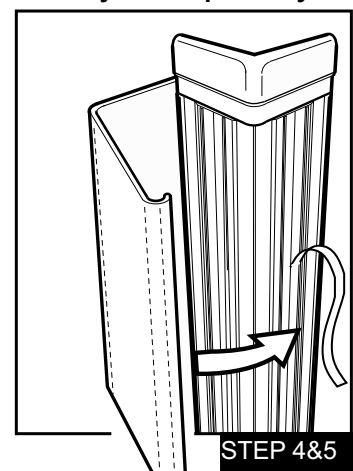
STEP 5

Engage the PVC cover, along one side of the retainer and snap fix into position.



STEP 3

Note: Factory cuts may not be perfectly square.



STEP 4&5