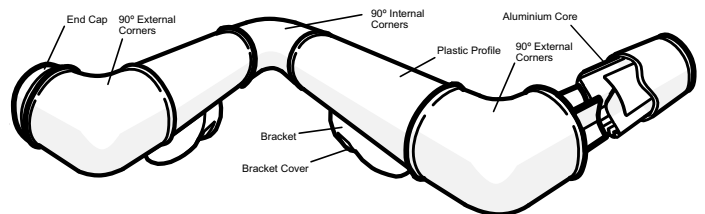


# Fixing Guide INTRAD RHR-45



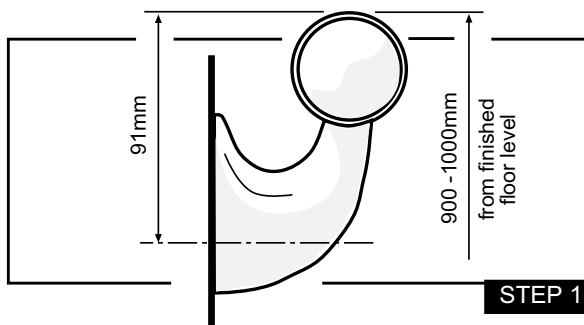
## General Information

INTRAD materials should be stored flat and protected against damage. Allow 24 hours for materials to reach ambient room temperature.



### STEP 1

Mark the wall at the required height. According to Building Regulations Approved Document M (1991), and Approved Document K (1992) the finished height to the top of a handrail should be between 900-1000mm above finished floor level.

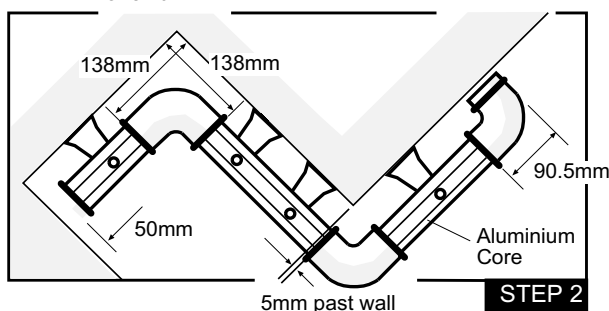


STEP 1



### STEP 2

Cut the aluminium core section to the desired length. See diagram for allowances at internal corners, external corners and ends of a run.



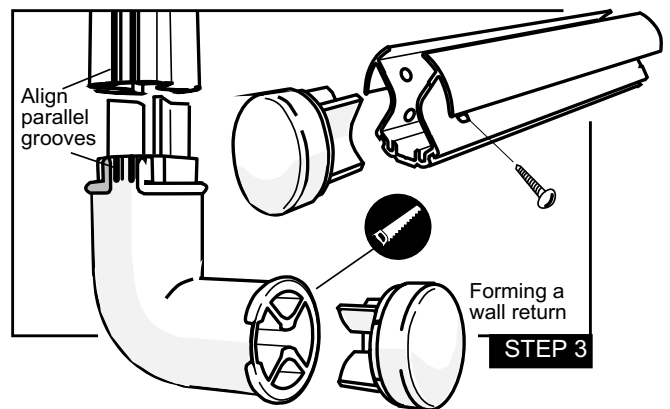
STEP 2



### STEP 3

Fit 90 degree corner accessories, wall returns and end caps by sliding the location lugs into the aluminium core rail. Ensure the two parallel grooves on the accessory align with the grooves in the aluminium. (The parallel grooves are on the underside of the finished handrail). Drill through the plastic lugs and aluminium and fit a self tapping screw, not supplied. (See diagram).

Wall returns are formed by trimming the spigot and lugs from one end of the 90 degree corner accessory, (see diagram) and push fitting an end cap onto the trimmed end.



STEP 3



### STEP 4

Mark position of mounting brackets on the wall at 500mm maximum centres and a maximum of 100mm from end caps, wall returns, external and internal corners. Also fit mounting brackets either side of any joint in the aluminium. Fix brackets to the wall, see fixings guide. A ratchet extension piece will be required. Tighten to maximum torque of 10 N/m.

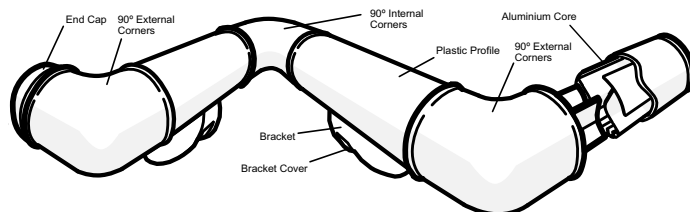
# Fixing Guide

## INTRAD RHR-45



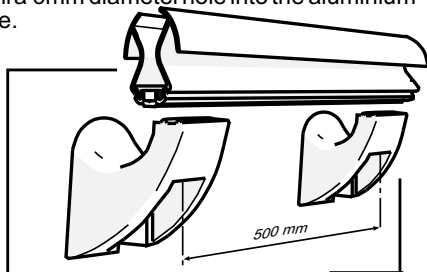
### General Information

INTRAD materials should be stored flat and protected against damage. Allow 24 hours for materials to reach ambient room temperature.



#### STEP 5

Locate the aluminium core onto the mounting brackets and mark the fixing hole positions. Drill a 6mm diameter hole into the aluminium core.

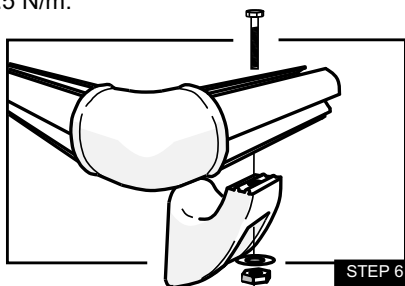


STEP 5



#### STEP 6

Using a M6x20mm bolt and washer, fix the aluminium core to the bracket. The head of the bolt will locate in the channel in the core and the nut and washer should be tightened from the underside using a ratchet and socket extension. Tighten to a maximum torque of 7.5 N/m.



STEP 6



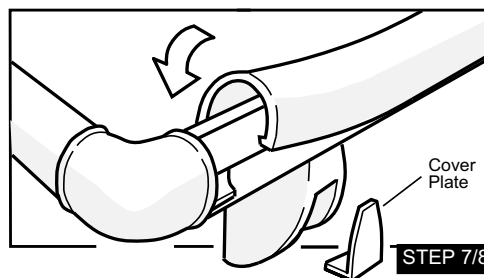
#### STEP 7

Measure and cut the PVC cover to suit, ensuring the joints do not coincide with the aluminium core. Joints are simply butted together, please ensure all cuts are perfectly square.

**Note: factory cuts may not be square.**

Prior to fitting PVC cover ensure sufficient mounting brackets have been fitted throughout the installation. Please note that once the PVC cover has been fitted it may be difficult to remove.

Open one end of the PVC cover and push over the aluminium core locating the PVC clips into the grooves in the underside. Working along the length push the PVC cover over the core, snapping the clips into the grooves. (See diagram)



STEP 7/8



#### STEP 8

Ensure all the fixings are tight. Note the bolt holding the handrail to the mounting brackets can be tightened even when the PVC cover has been fitted.

Locate and slide the mounting bracket fixing cover plates into position. Press firmly into position. (see diagram).



#### STEP 9

Check for and remove any sharp protrusions which may be hazardous.