

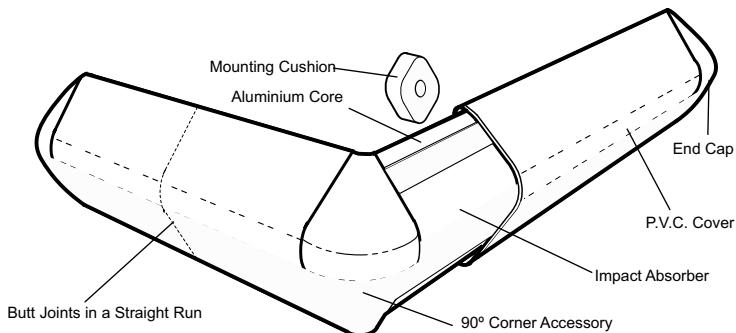
Fixing Guide

INTRAD RHB-100



General Information

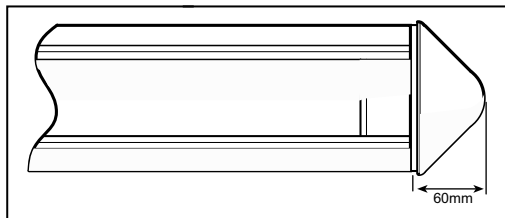
INTRAD materials should be stored flat and protected against damage. Allow 24 hours for materials to reach ambient room temperature.



STEP 1
Mark out wall at required height.



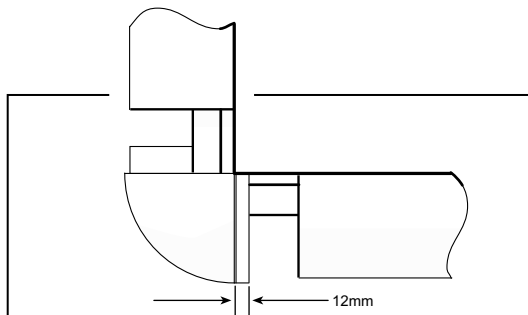
STEP 2
Cut aluminium core to the required length. To allow fitting of the end cap at the end of a run, or at internal corners reduce aluminium length by 60mm.



STEP 2



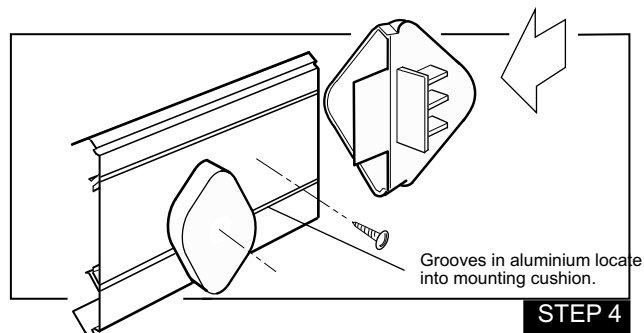
STEP 3
At external corners where a 90 degree corner accessory is to be used, the aluminium needs to be shortened by 12mm (on one side of the corner only).



STEP 3



STEP 4
Slide the locating lugs on the end caps and 90 degree accessory into the aluminium core and fix through the reverse using rivets or self tapping screws. (Fixings not supplied).



STEP 4



STEP 5
Drill fixing holes in the aluminium at maximum 600mm centres and at no more than 100mm from the end of a run, joint or corner. Mark and drill the wall using the aluminium as a guide.

Note: Factory cuts may not be perfectly square.

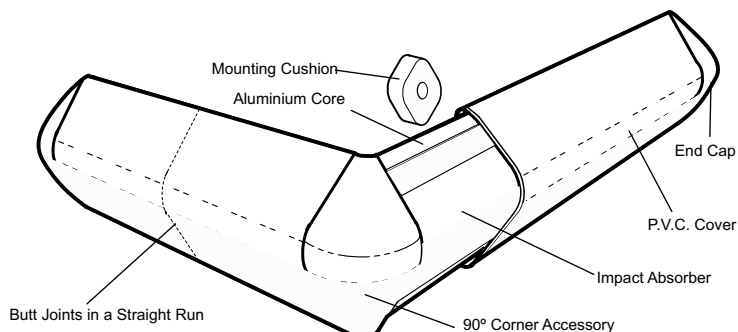
Fixing Guide

INTRAD RHB-100



General Information

INTRAD materials should be stored flat and protected against damage. Allow 24 hours for materials to reach ambient room temperature.



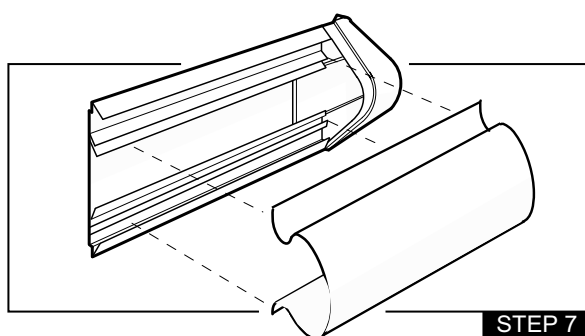
STEP 6

Offer the aluminium and mounting cushions to the wall and screw fix into Position. Ensure the locating ribs on the mounting cushions are correctly located into the grooves in the aluminium.



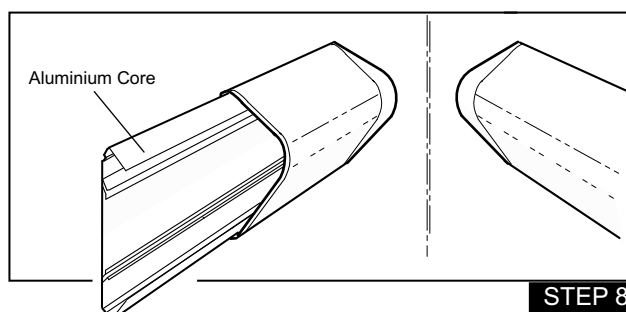
STEP 7

Cut PVC impact absorber to length and fit into the aluminium core by locating the open ends into the two parallel grooves in the aluminium. Joints in the PVC and aluminium should not coincide.



STEP 8

Cut the PVC cover section to suit ensuring that joints do not coincide with the aluminium or impact absorber. Ends should be cut square for a neat butt joint. For internal corners the aluminium core and PVC cover are stopped short of internal corners and fitted with end caps.



STEP 9

Snap the PVC cover over the aluminium core.

Note: Factory cuts may not be perfectly square.

