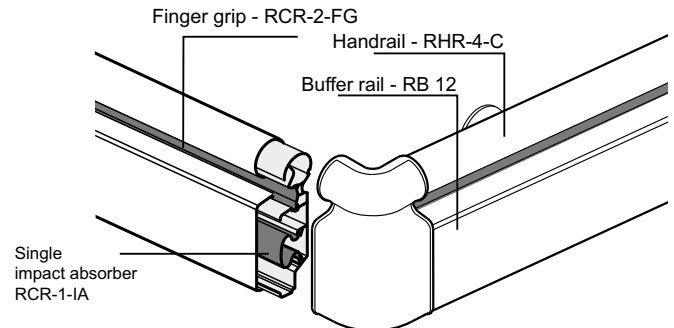


Fixing Guide INTRAD RCR-200



General Information

INTRAD materials should be stored flat and protected against damage. Allow 24 hours for materials to reach ambient room temperature.



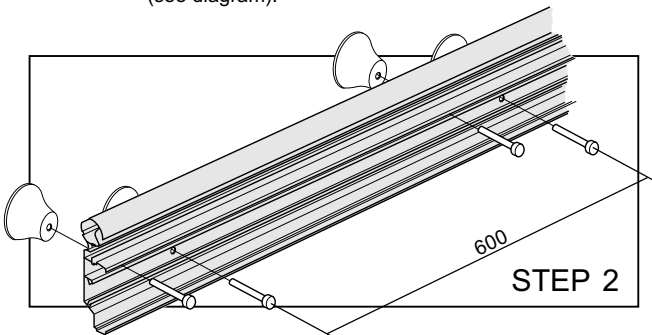
STEP 1

Mark out wall at required height.



STEP 2

Cut the aluminium core to the required length (taking into consideration the dimensions of the accessories), and drill fixing holes. Fixing holes should be spaced at 600mm centres (max) and no more than 100mm from the end of runs, external and internal corners and butt joints. Use the groove in the aluminium core to locate the drill bit. At 90° external corners, the aluminium core should be cut in line with the corner. At internal corners the aluminium core should be cut to stop short of the corner by 240mm (see diagram).

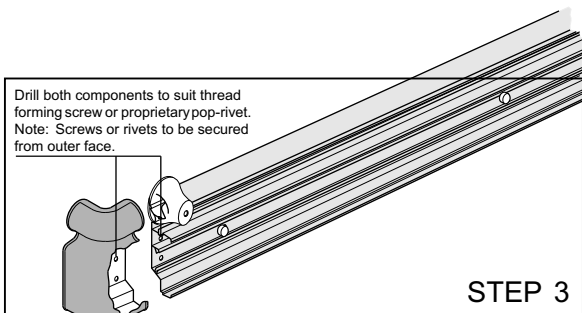


STEP 2



STEP 3

Form the required number of right and left hand wall returns by cutting off the appropriate centre lug and flanges from each 90° Corner Accessory. An end cap should now be fitted into the wall return accessory.



Drill both components to suit thread forming screw or proprietary pop-rivet.
Note: Screws or rivets to be secured from outer face.

STEP 3



STEP 4

Using the aluminium core as a template mark and drill the wall.



STEP 5

Engage the wall returns, corner accessories and end caps into the aluminium core by sliding the lugs into the core profile. Drill the core and lugs then fix from rear with self-tapping screws. Ensure that the screw heads do not foul the PVC cover.



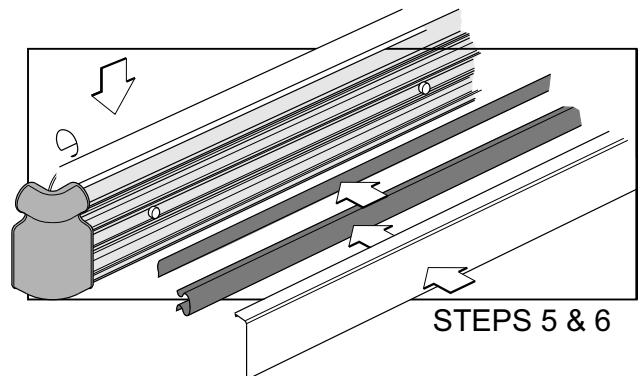
Note: Wall returns, corner accessories and end caps should be fixed before the aluminium core is fitted to the wall.

STEP 6



Secure the aluminium core and spacers to the wall using a suitable fixing (see fixing guide overleaf). Work from internal corners towards external corners / end of runs.

Note: Factory cuts may not be perfectly square



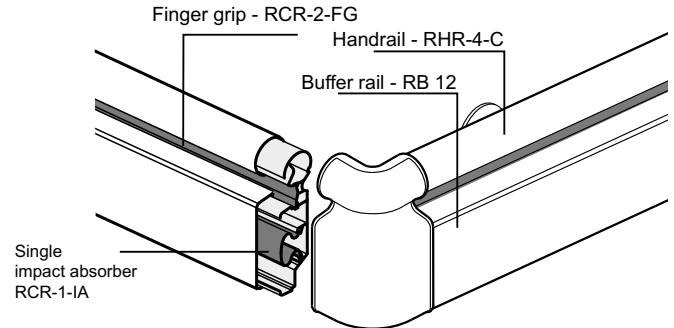
STEPS 5 & 6

Fixing Guide INTRAD RCR-200



General Information

INTRAD materials should be stored flat and protected against damage. Allow 24 hours for materials to reach ambient room temperature.



STEP 7

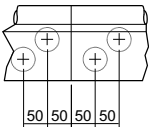
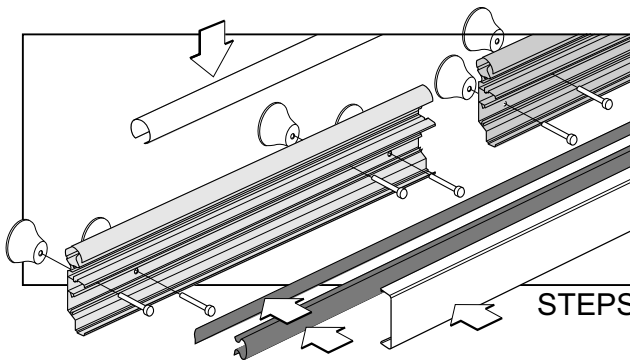
Using a fine tooth saw cut the impact absorber to size then insert the impact absorber into the appropriate grooves in the aluminium core. Take care that joints in the aluminium core do not coincide with joints in the impact absorber.



STEP 8

Cut the PVC cover to length and snap fix over the aluminium core. Ensure that joints in the PVC cover do not coincide with joints in the aluminium core and impact absorber.

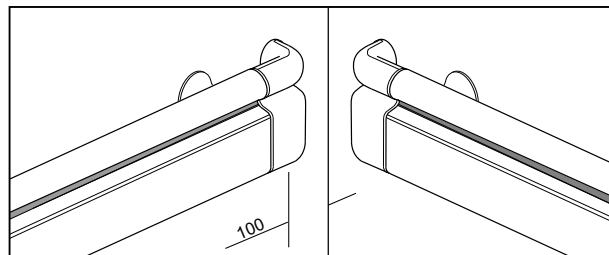
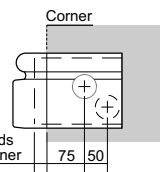
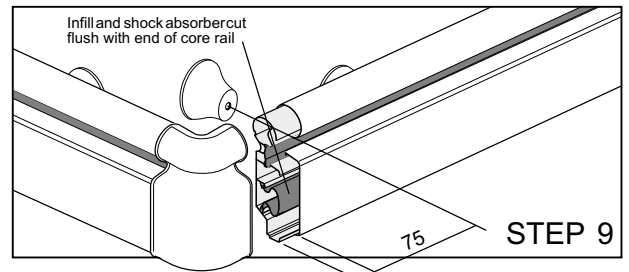
Note: Factory cuts may not be perfectly square.



STEP 9

Once the combi-rail assembly is secured to the wall and the PVC cover is fitted, the insert strip can be fixed. Peel away the backing of the double sided tape on the PVC cover. Carefully position the insert strip on the PVC cover by aligning the top edge with the top of the insert area on the PVC cover. Smooth down into position using light pressure. When the insert strip is in the correct position apply firm pressure along the whole length to achieve a good bond.

Important: Remove any sharp edges from the profile, which may be hazardous.



STEPS 8 & 9

