

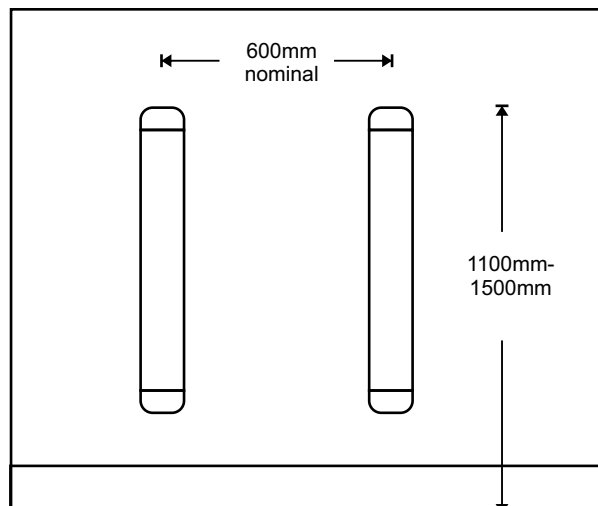
Fixing Guide

INTRAD BHL-100



General Information

INTRAD materials should be stored flat and protected against damage. Allow 24 hours for materials to reach ambient room temperature.



STEP 1

Mark out wall at required height.



STEP 2

Drill the aluminium at 600mm centres and use as a template to mark the wall for drilling.



STEP 3

Select the correct fixings for the wall construction and drill the wall accordingly



STEP 4

Fix the end caps to the aluminum core with self tapping screws. Fix from the back inwards.



STEP 5

Fix the bed head buffer to the wall. Ensure the location grooves of the aluminum core and spacer block line up correctly



STEP 6

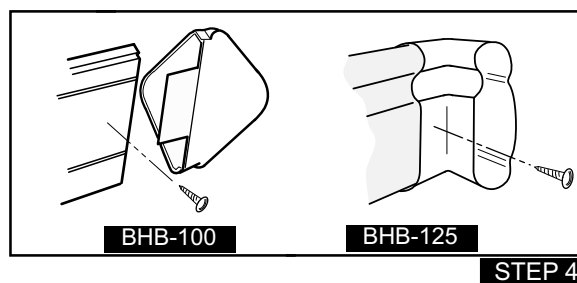
Clip in the impact absorber



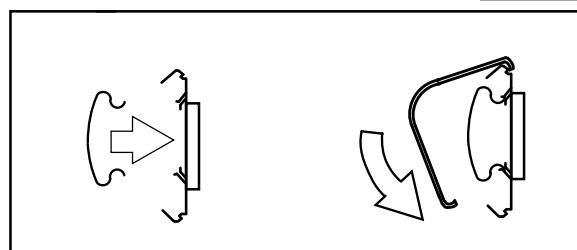
STEP 7

Snap the high impact cover onto the aluminium.

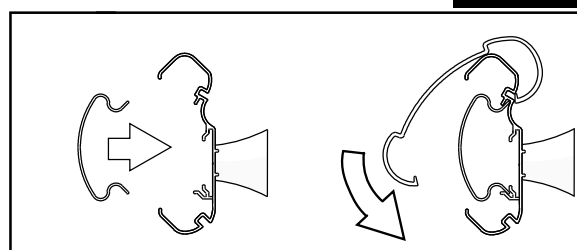
NB: For General guidance only.
Specific site conditions must prevail.



STEP 4



BHB-100



BHB-125